

# Infinity 3.0 Race Suits

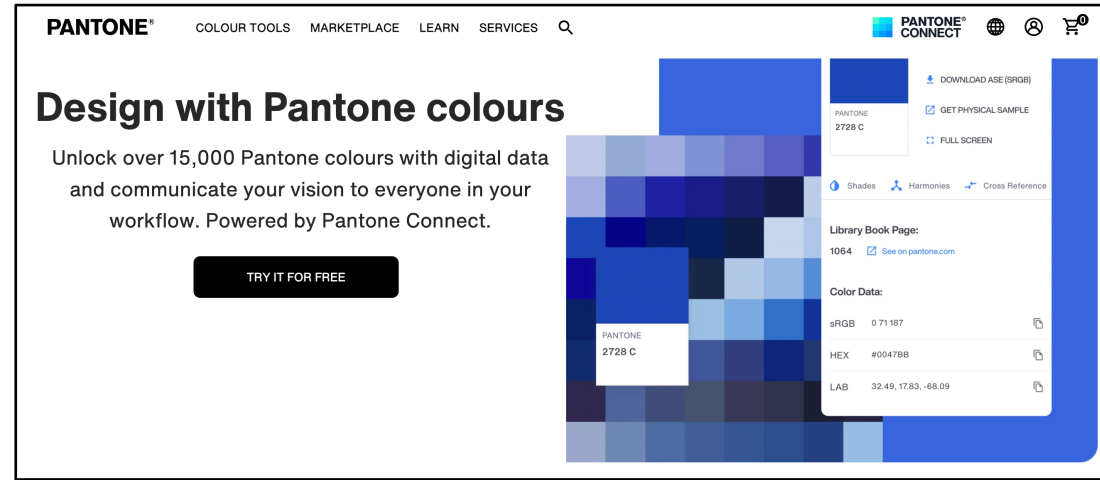
**STEP 1:** Select your suit

**STEP 2:** Choose your size and place the suit in your basket, and when finished shopping, complete the Check Out process.

**STEP 3:** Download the PDF form and start designing your own custom-made race suit. If ordering a made-to-measure suit, please also download the PDF custom size form too.

**STEP 4:** All colour choices need to be made using the industry standard Pantone colour reference.

For help in choosing and locating the correct code, please visit <https://www.pantone.com/uk/en/connect> and enter in the search box indicated the colour you are searching for.



**STEP 5:** Please indicate the size and position of all artwork required. Email the completed form/s and all artwork files (high quality .ai, .jpg, 600 dpi, vector, .pdf, .eps, or .png) to [info@gprdirect.com](mailto:info@gprdirect.com) or send in the post to Custom Suit Orders, Grand Prix Racewear, Unit 1, Silverstone Park, Silverstone Circuit, Northamptonshire NN12 8TN.

**STEP 6:** In 2/3 days we will send you an email including a full colour proof, ready for your approval and final amends.

**STEP 7:** You will be kept fully up-to-date by email of the expected delivery date (please allow approximately 6 weeks for production from time of your approval). Upon dispatch an automated email will be sent with your parcel tracking number.

**STEP 8:** Enjoy your one off, custom race suit and the improved lap times sure to come with it!

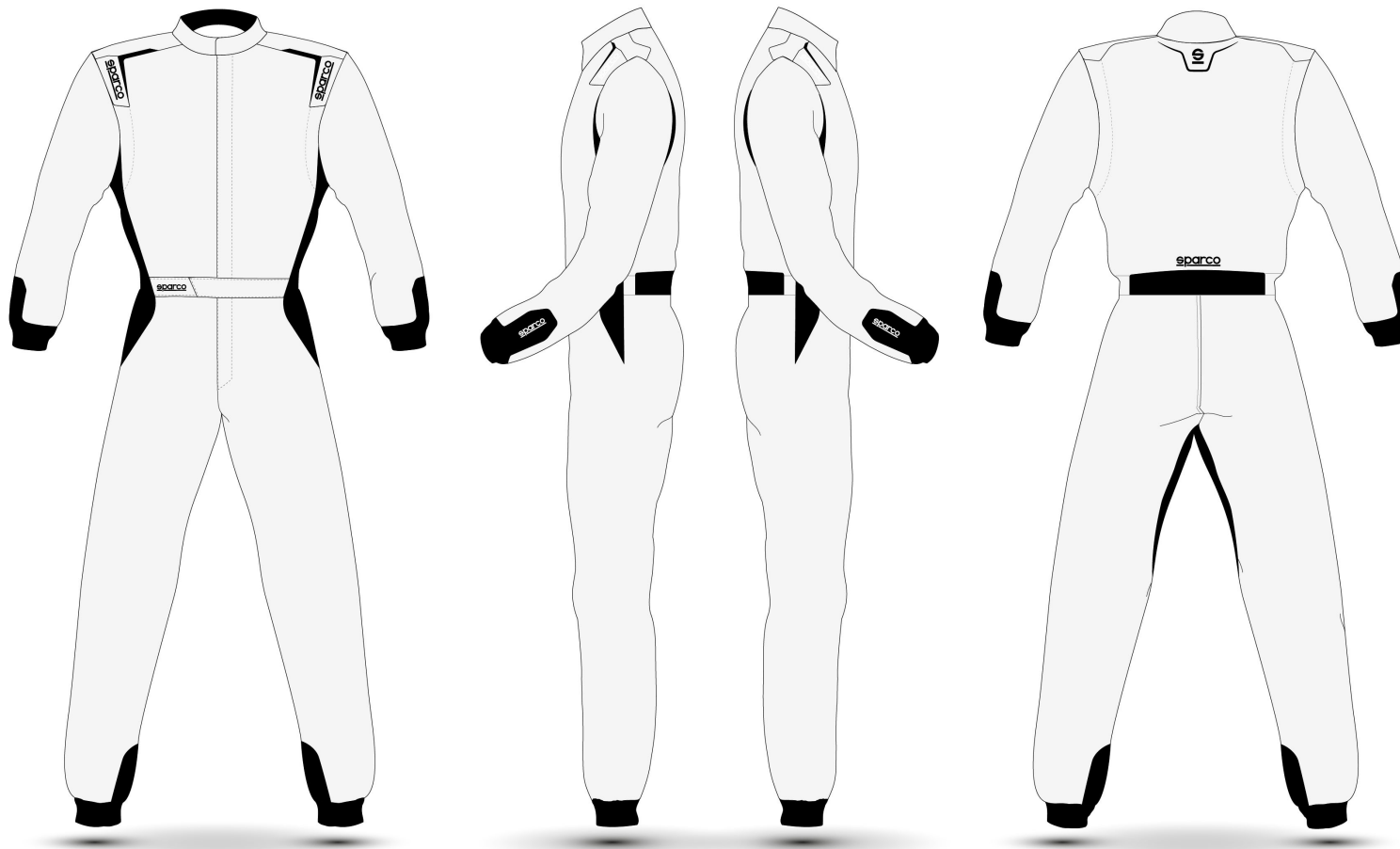
**Grand Prix  
Racewear**  
SILVERSTONE

**Please Note:**

Custom/Made-to-measure suits are non-refundable as these are made to special order at your request. We cannot be held responsible for any delay to the quoted delivery time.

**sparco**





Your Name:

---

Your Suit Size (48-66)

---

Your Telephone Number:

---

Your Email Address:

---

Please note that parts shown in black are knitted parts that cannot be modified. All other parts can be printed to your design. A proof will be supplied for your approval before printing.

**sparco**

