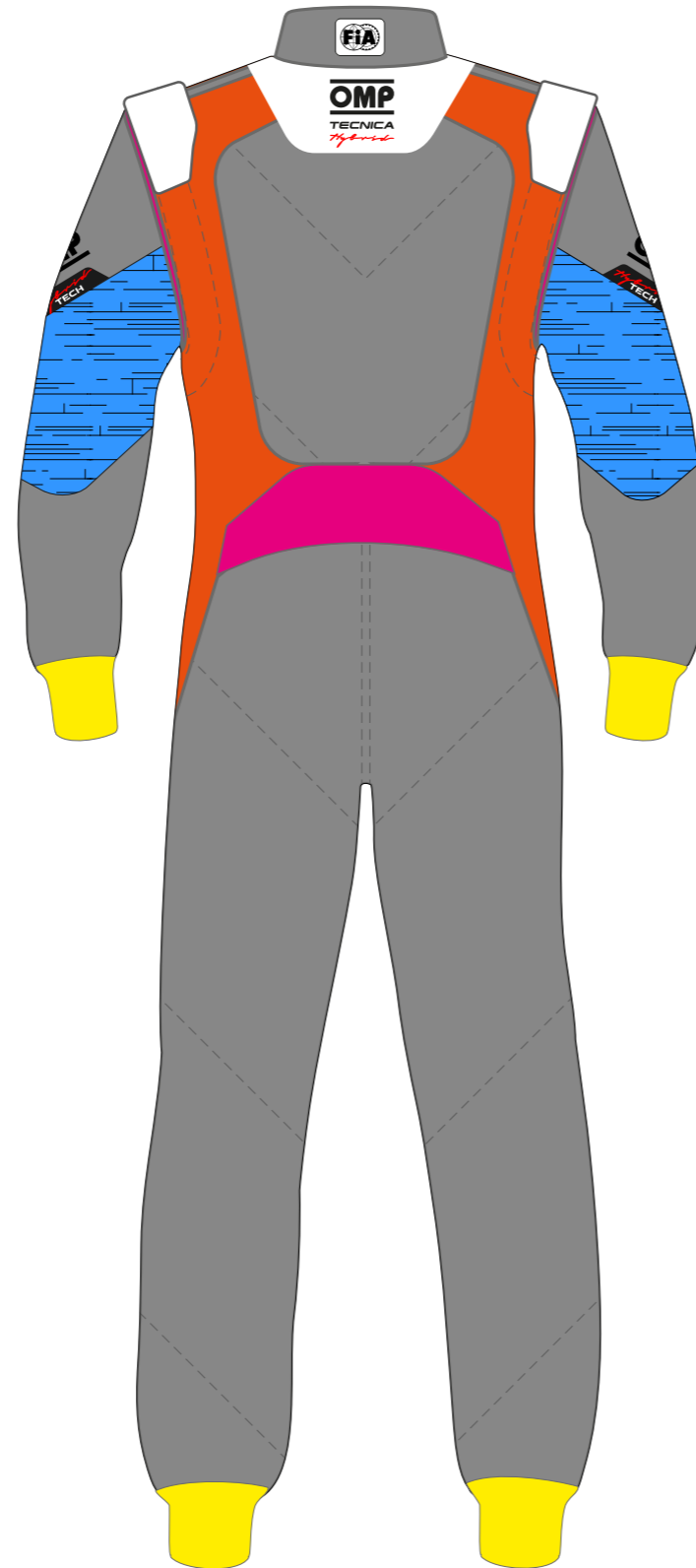
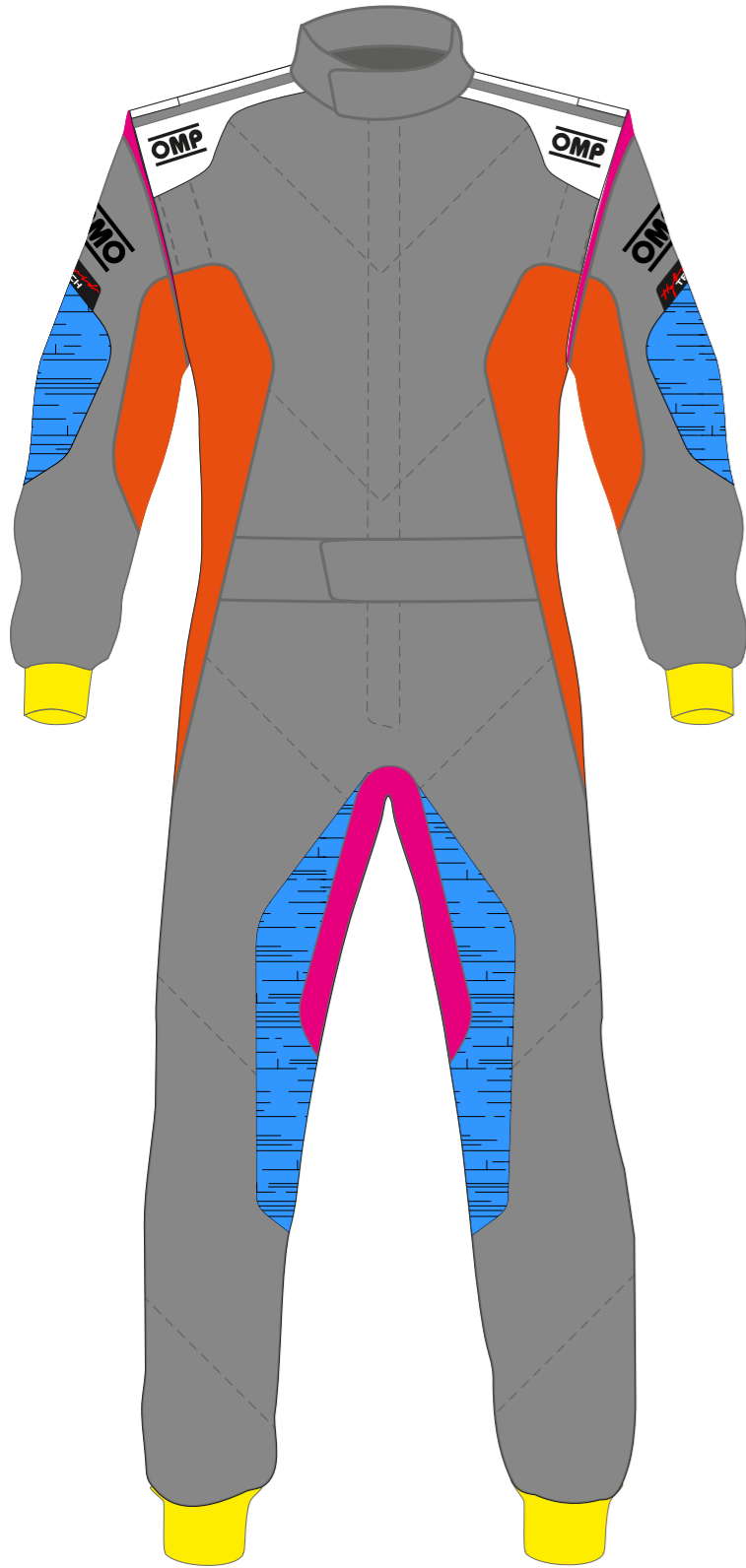




# SUIT CUSTOMIZATION TUTOR



## GREY AREA

MAIN ASSEMBLY

## WHITE AREA

FOR SHOULDER STRIPES A DIFFERENT AND MONOCHROMATIC COLOR MUST BE USED

LIGHT BLUE XTI-147-040	TIFFANY XTI-147-375	CYAN XTI-147-244	ROYAL BLUE XTI-147-041	NAVY BLUE XTI-147-042	BLACK XTI-147-071	ANTHRACITE XTI-147-084	SILVER XTI-147-083	WHITE XTI-147-020	ECRÛ XTI-147-022
YELLOW XTI-147-051	FLUO YELLOW XTI-147-099	FLUO GREEN XTI-147-039	FLUORANGE XTI-147-090	PINK XTI-147-CS	RED XTI-147-061				

## ORANGE AREA

BREATHABLE FABRIC - NOT PRINTABLE/EMBROIDERABLE

WHITE XTI-604-020	ROYAL BLUE XTI-604-041	RED XTI-604-061	DARK GREY XTI-604-082	FLUOYELLOW XTI-604-099	BLACK XTI-604-071
----------------------	---------------------------	--------------------	--------------------------	---------------------------	----------------------

## PINK AREA

INTERLOCK FABRIC - NOT PRINTABLE/EMBROIDERABLE

ROYAL BLUE XTI-102-041	NAVY BLUE XTI-102-042	RED XTI-102-061	DARK GREY XTI-102-082	BLACK XTI-102-071	SILVER XTI-102-081	WHITE XTI-102-020	ECRÛ XTI-102-028	FLUOYELLOW XTI-102-099	GREEN* XTI-102-031
---------------------------	--------------------------	--------------------	--------------------------	----------------------	-----------------------	----------------------	---------------------	---------------------------	-----------------------

\*while stocks last

## YELLOW AREA

WRIST AND ANKLE CUFF'S FABRIC

ROYAL BLUE XTI-105-N-041	NAVY BLUE XTI-105-N-042	RED XTI-105-N-061	DARK GREY XTI-105-N-082	BLACK XTI-105-N-071	SILVER XTI-105-N-081	WHITE XTI-105-N-020	ECRÛ XTI-105-N-022	YELLOW* XTI-105-N051	BROWN* XTI-105-N010
-----------------------------	----------------------------	----------------------	----------------------------	------------------------	-------------------------	------------------------	-----------------------	-------------------------	------------------------

\*while stocks last

## SUBLIMATION PRINTING AREA

VECTOR GRAPHICS

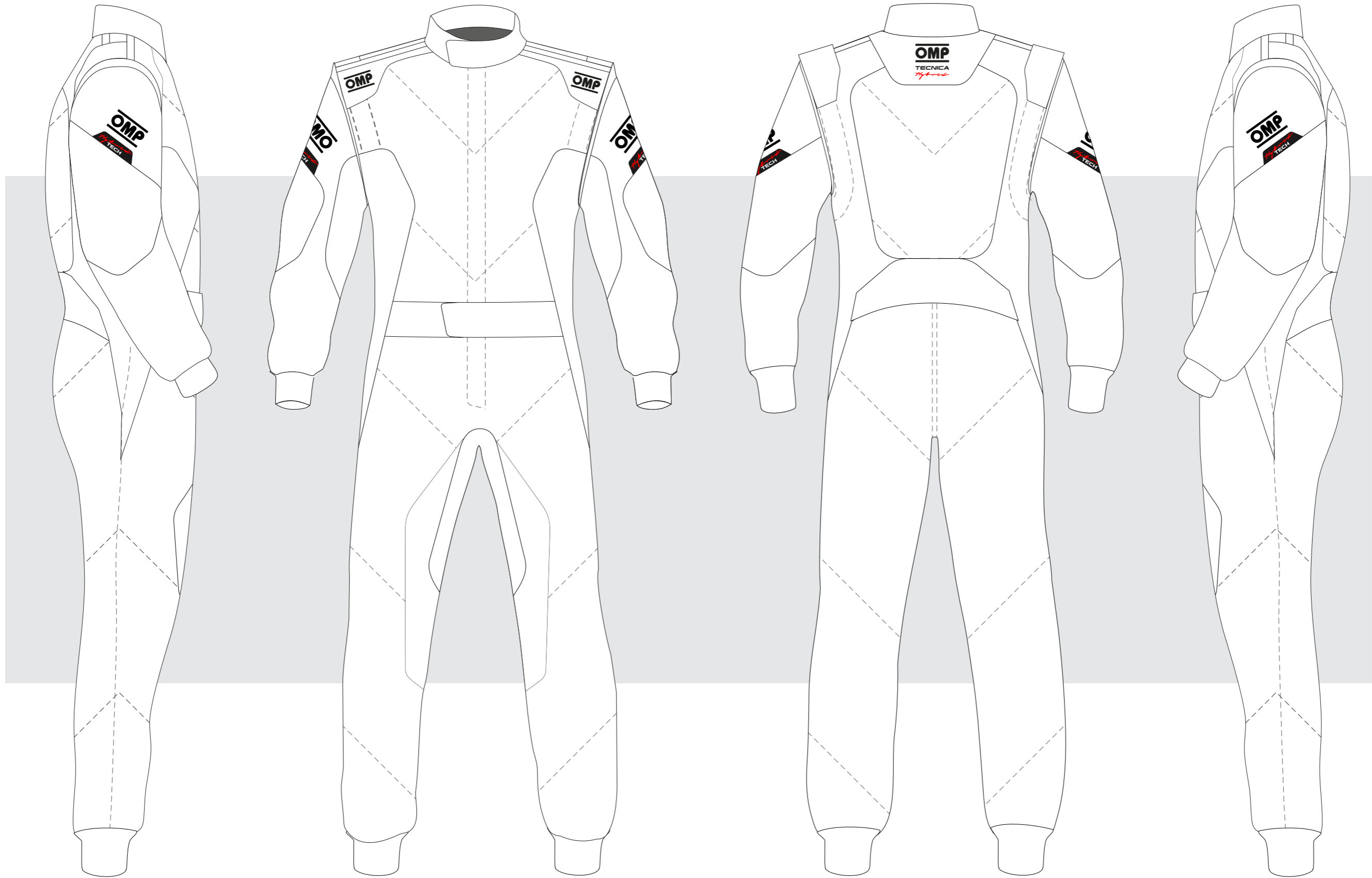


CUSTOMER: \_\_\_\_\_

TEAM: \_\_\_\_\_

DRIVER NAME: \_\_\_\_\_

CUSTOMIZED SUIT CONFIGURATOR



**TECNICA**  
*Hybrid*

**A1864**

© OMP RACING SPA - ALL RIGHTS RESERVED

DATE: \_\_\_\_\_ REV. \_\_\_\_\_

THIS DESIGN IS THE INTELLECTUAL PROPERTY OF OMP RACING SPA - ANY REPRODUCTION WITHOUT PERMISSION WILL BE PROSECUTED TO THE FULLEST EXTENT OF THE LAW. By approving this sketch, the customer acknowledges that, during the process of manufacturing, variations may occur in colors and other minor aspects, because of the use of different technologies for the acquisition and reproduction of images, and for the making of the suit itself. OMP is not responsible for such variations and deviations. For further information: [www.ompracing.com](http://www.ompracing.com)